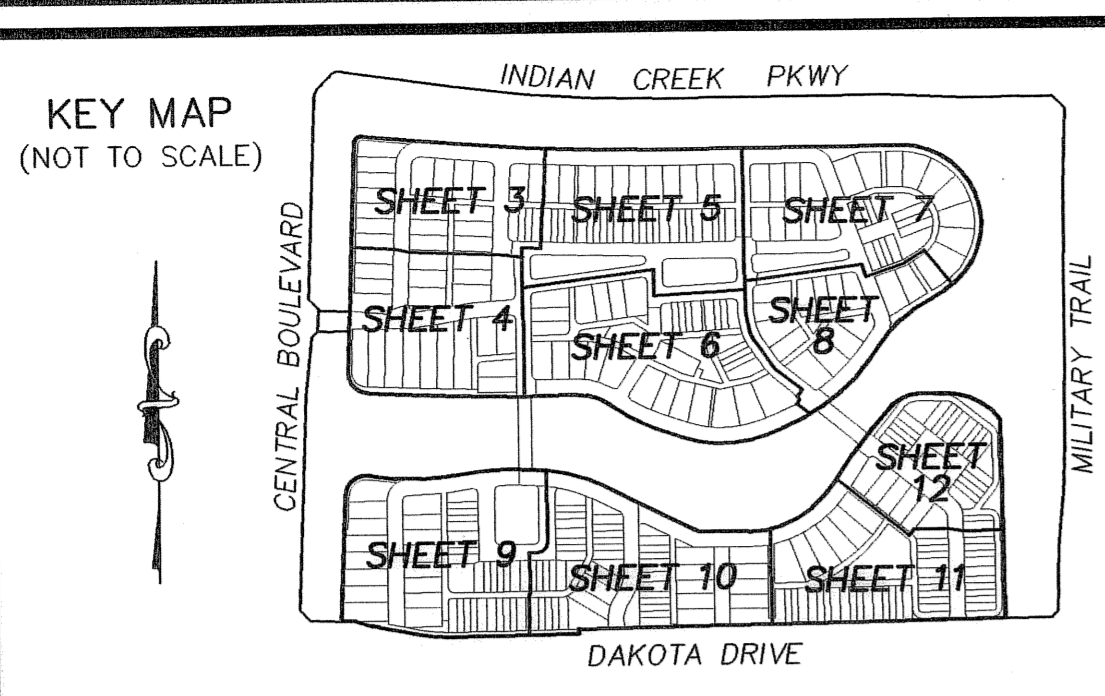


CANTERBURY PLACE

BEING A REPLAT OF TRACTS RN5N AND RN5S, ABACOA PLAT NO. 2, AS RECORDED IN PLAT BOOK 86, PAGES 16 THROUGH 28, OF THE PUBLIC RECORDS OF PALM BEACH COUNTY, FLORIDA, LYING IN SECTION 13, TOWNSHIP 41 SOUTH, RANGE 42 EAST TOWN OF JUPITER, PALM BEACH COUNTY, FLORIDA

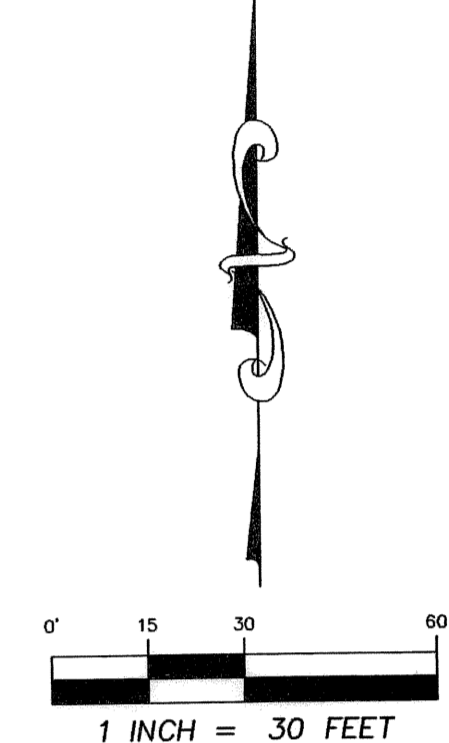
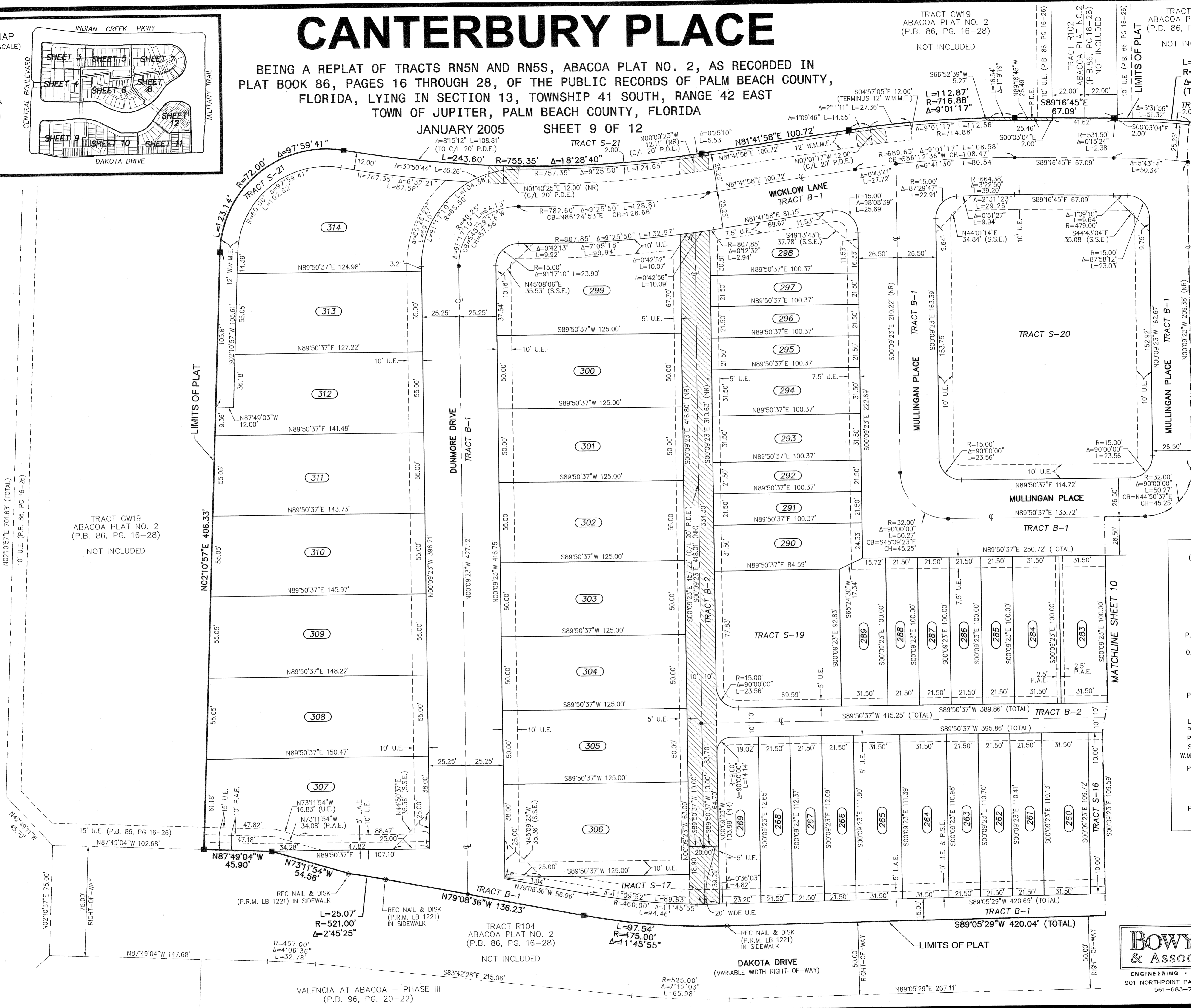
JANUARY 2005 SHEET 9 OF 12



TRACT GW19 ABACOA PLAT NO. 2 (P.B. 86, PG. 16-28) NOT INCLUDED
TRACT GW18 ABACOA PLAT NO. 2 (P.B. 86, PG. 16-28) NOT INCLUDED

CENTRAL BOULEVARD
ABACOA - CENTRAL BOULEVARD PLAT (P.B. 85, PG. 152-157)
CENTRAL BOULEVARD
N02°10'57"E 701.63' (TOTAL)
10' U.E. (P.B. 86, PG. 16-26)

TRACT GW19 ABACOA PLAT NO. 2 (P.B. 86, PG. 16-28) NOT INCLUDED



- LEGEND & ABBREVIATIONS**
- (R) RADIAL
 - (NR) NOT-RADIAL
 - C CENTERLINE
 - R RADIUS
 - L ARC LENGTH
 - Δ DELTA (CENTRAL ANGLE)
 - CB CHORD BEARING
 - CH CHORD LENGTH
 - LB CERTIFICATE OF AUTHORIZATION
 - NO. NUMBER
 - P.S.M. PROFESSIONAL SURVEYOR & MAPPER
 - P.B. PLAT BOOK
 - O.R.B. OFFICIAL RECORD BOOK
 - P.G. PAGE
 - REC RECOVERED / FOUND
 - U.E. UTILITY EASEMENT
 - D.E. DRAINAGE EASEMENT
 - P.D.E. PUBLIC DRAINAGE EASEMENT
 - HATCHED THUS:
 - L.A.E. LIMITED ACCESS EASEMENT
 - P.S.E. PUBLIC SIDEWALK EASEMENT
 - P.A.E. PEDESTRIAN ACCESS EASEMENT
 - S.S.E. SAFE SIGHT EASEMENT
 - W.M.M.E. WATER MANAGEMENT MAINTENANCE EASEMENT
 - P.R.M. PERMANENT REFERENCE MONUMENT
 - 4"x4" CONCRETE MONUMENT WITH NAIL & DISK STAMPED "P.R.M. LB 1221"
 - NAIL & DISK STAMPED "P.R.M. LB 1221"
 - P.C.P. PERMANENT CONTROL POINT
 - NAIL & DISK STAMPED "P.C.P. LB 1221"

THIS INSTRUMENT PREPARED BY WILLIAM D. DONLEY, FLORIDA LICENSED SURVEYOR & MAPPER NO. 5381 BOWYER-SINGLETON AND ASSOCIATES, INC. 901 NORTHPOINT PARKWAY, SUITE 204 WEST PALM BEACH, FLORIDA 33407

CERTIFICATE OF AUTHORIZATION NO. LB 1221

BOWYER-SINGLETON & ASSOCIATES, INCORPORATED

ENGINEERING • PLANNING • SURVEYING • ENVIRONMENTAL

901 NORTHPOINT PARKWAY, SUITE 204 WEST PALM BEACH, FL 33407
561-683-7101 • FAX 561-683-7102 • L.B. NO. 1221

VALENCIA AT ABACOA - PHASE III (P.B. 96, PG. 20-22)

TRACT R104 ABACOA PLAT NO. 2 (P.B. 86, PG. 16-28) NOT INCLUDED

DAKOTA DRIVE (VARIABLE WIDTH RIGHT-OF-WAY)

LIMITS OF PLAT

MATCHLINE SHEET 10

LIMITS OF PLAT